

DMDU in spatial adaptation: embracing vagueness to enable the emergence of linkage opportunities

Berry Gersonius (FR chair group, IHE Delft)

With:

Sadie McEvoy (Deltares)

Ellen Kelder (Dordrecht)

Richard Ashley (FR chair group, IHE Delft)



Dordrecht in the Dutch Delta



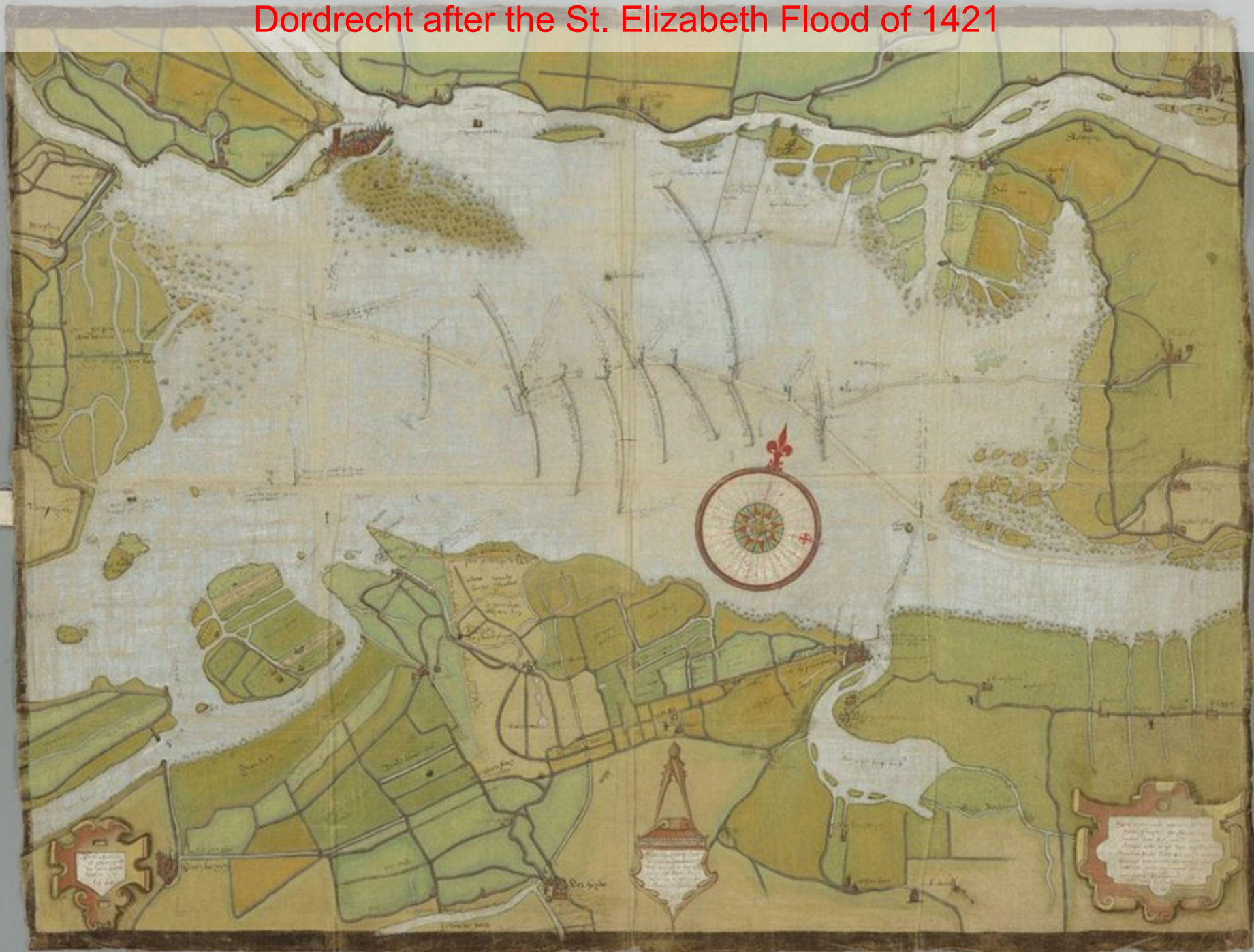
Amsterdam ●

Rotterdam ●

Dordrecht as an Island surrounded by rivers



Dordrecht after the St. Elizabeth Flood of 1421



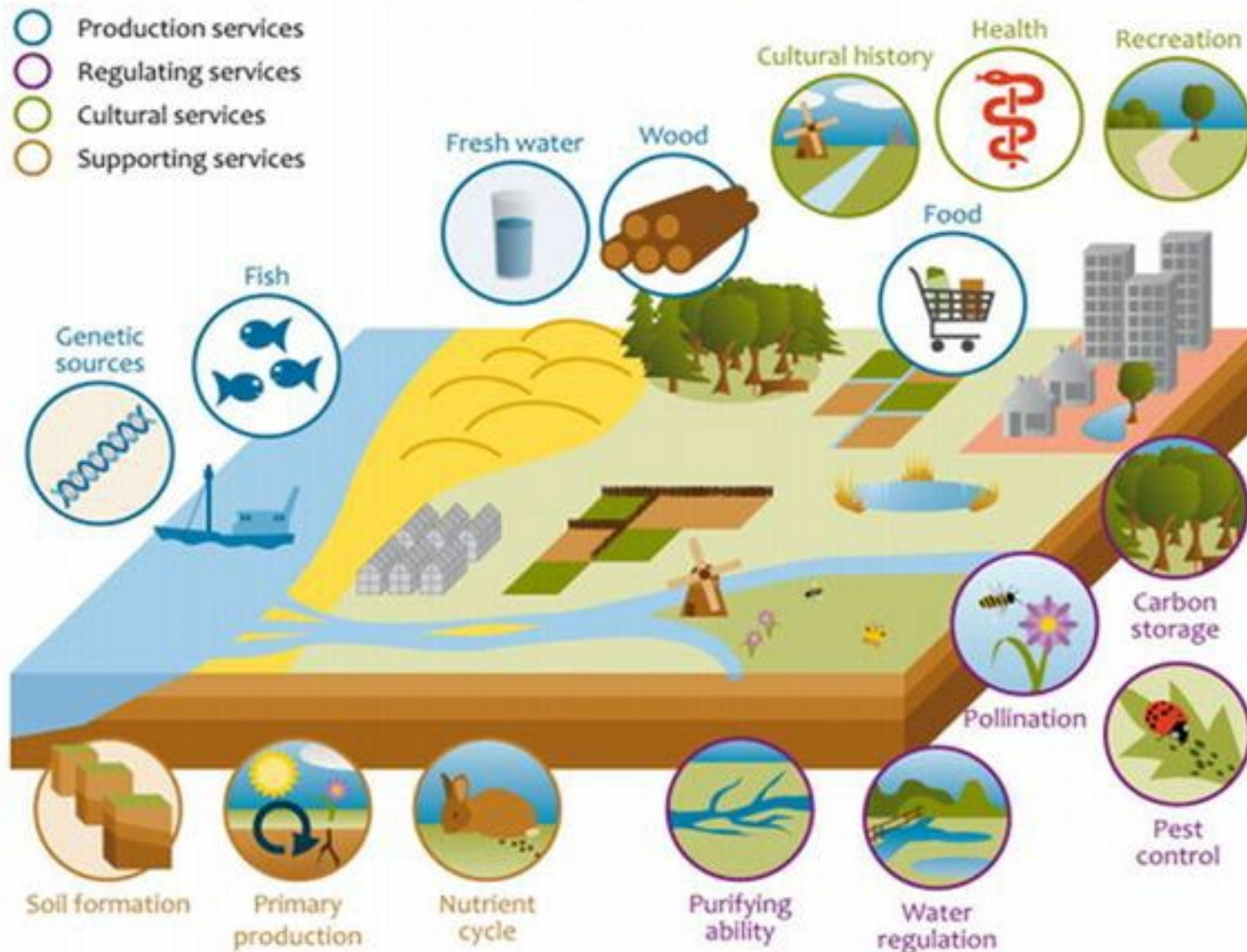


Loss of resilience, where the regime shifted from agriculture to nature



Nature provides us with a range of services, incl. water regulation

Examples of ecosystem services in the Netherlands



Regime shift (depoldering) as a deliberate process in Noordwaard

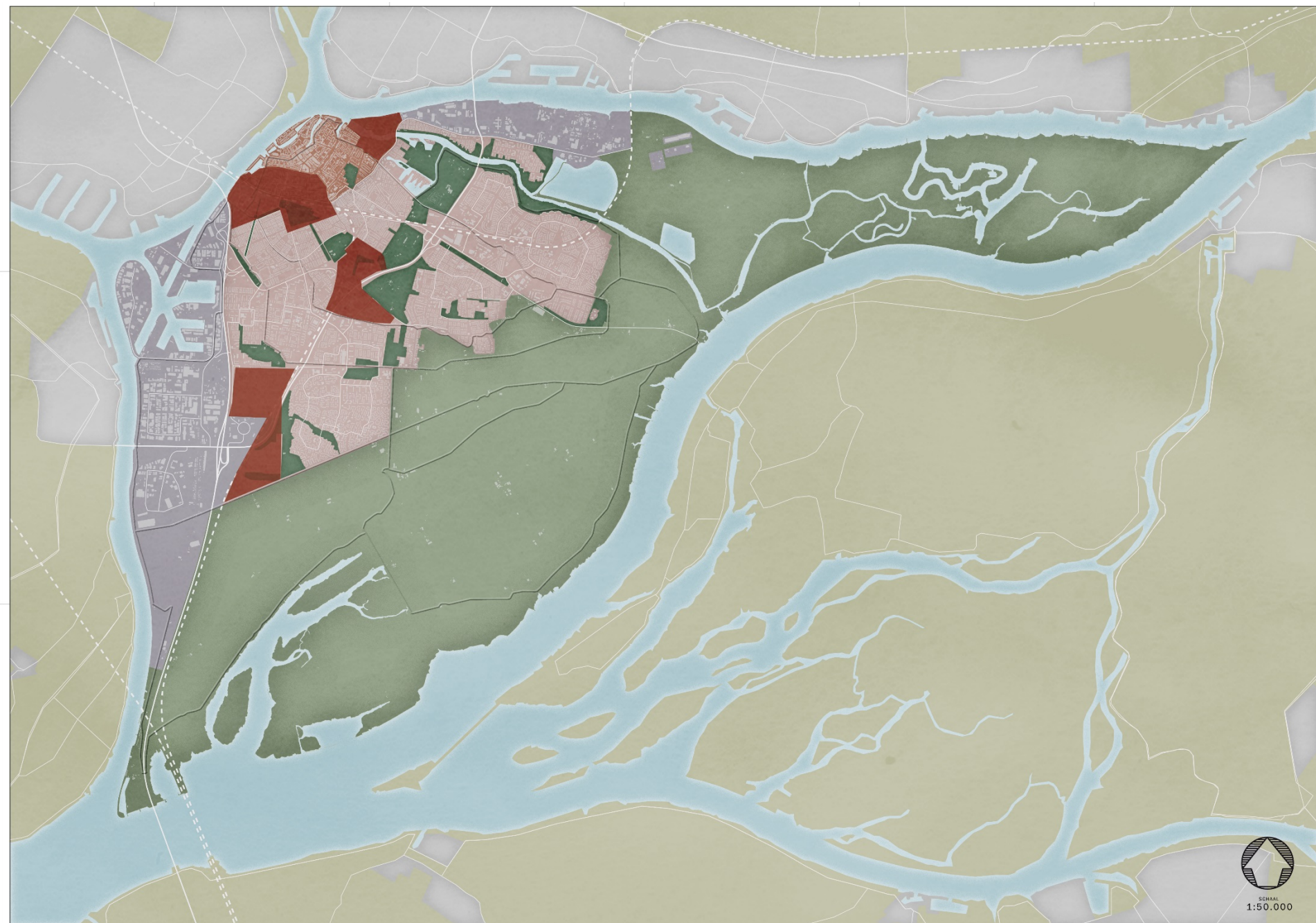


Nature restoration in coalition agreement

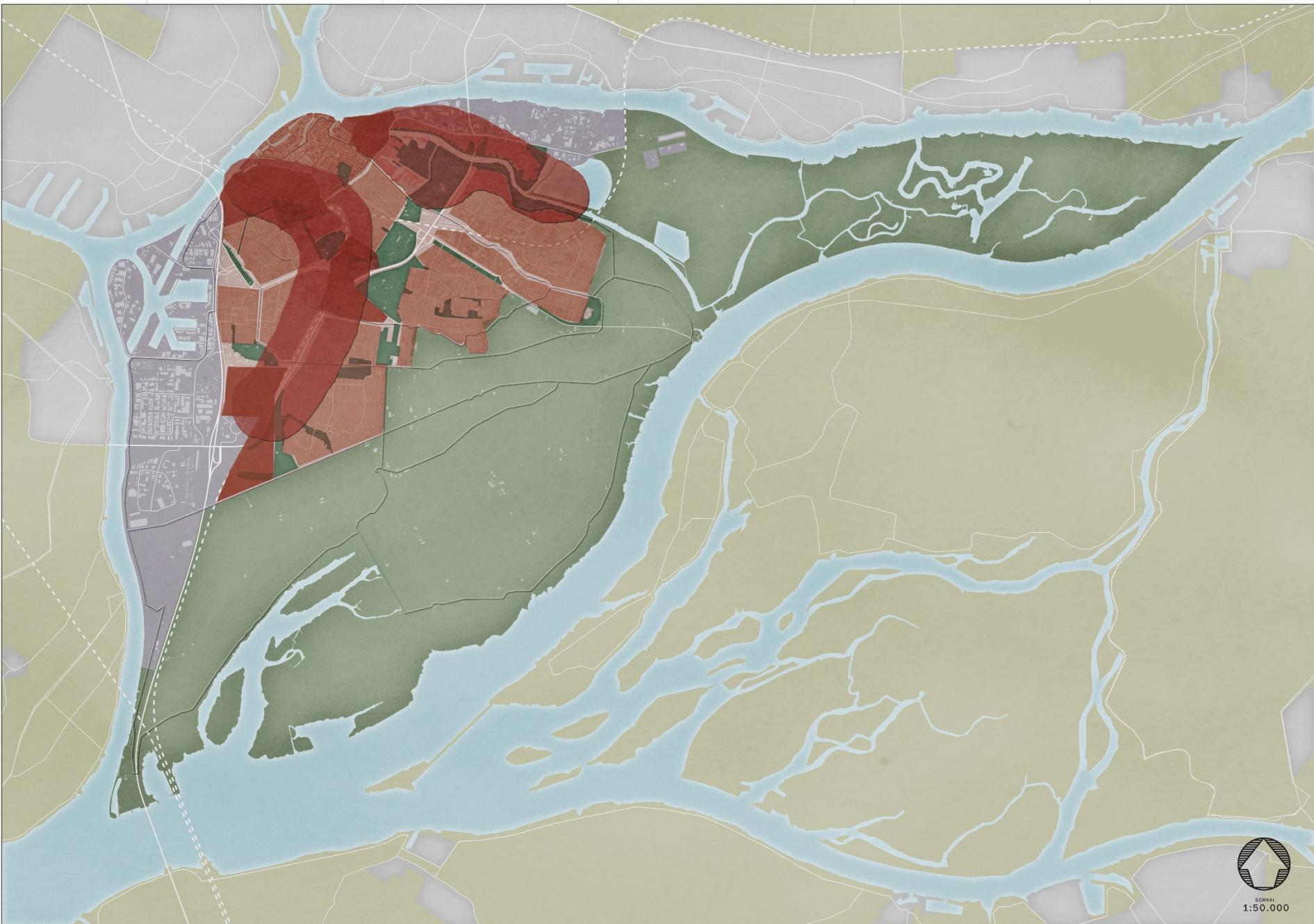
In addition to the housing ambition (an extra 10.000), we also formulate an ambition on green (nature) and blue (water): with as carrying elements the two green corridors characteristic of the city, Dordtwijkzone and Wantijzone, and as intricate branches the dike ribbons, creeks, green avenues and parks that bring the green in the city until the front door.



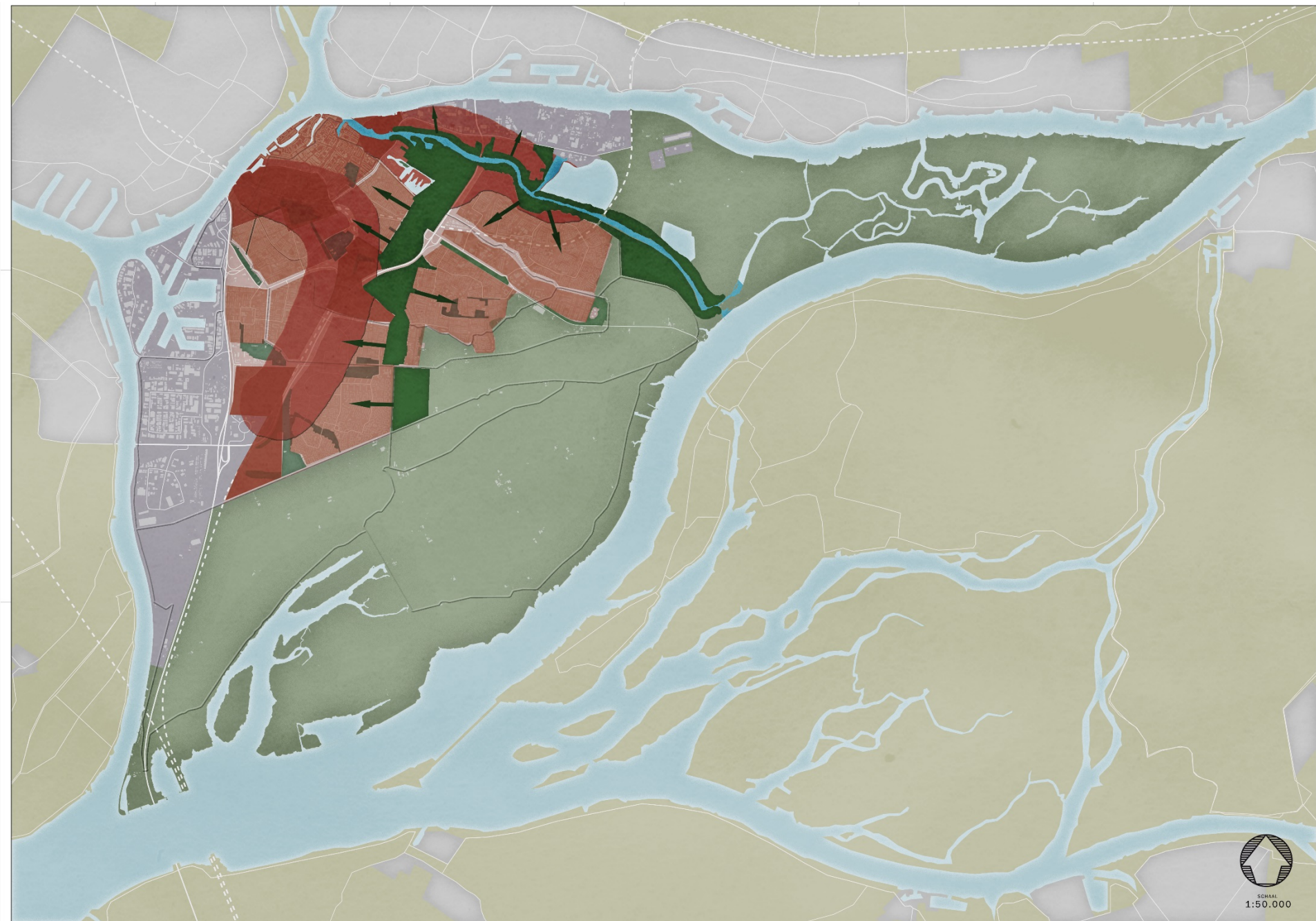
Project area(s) for 4.000 extra houses in next 4 years



Study area for required 6.000 extra houses (after 4 years)



Green blue network of good quality / greens lungs



Green and blue as leverage for liveability

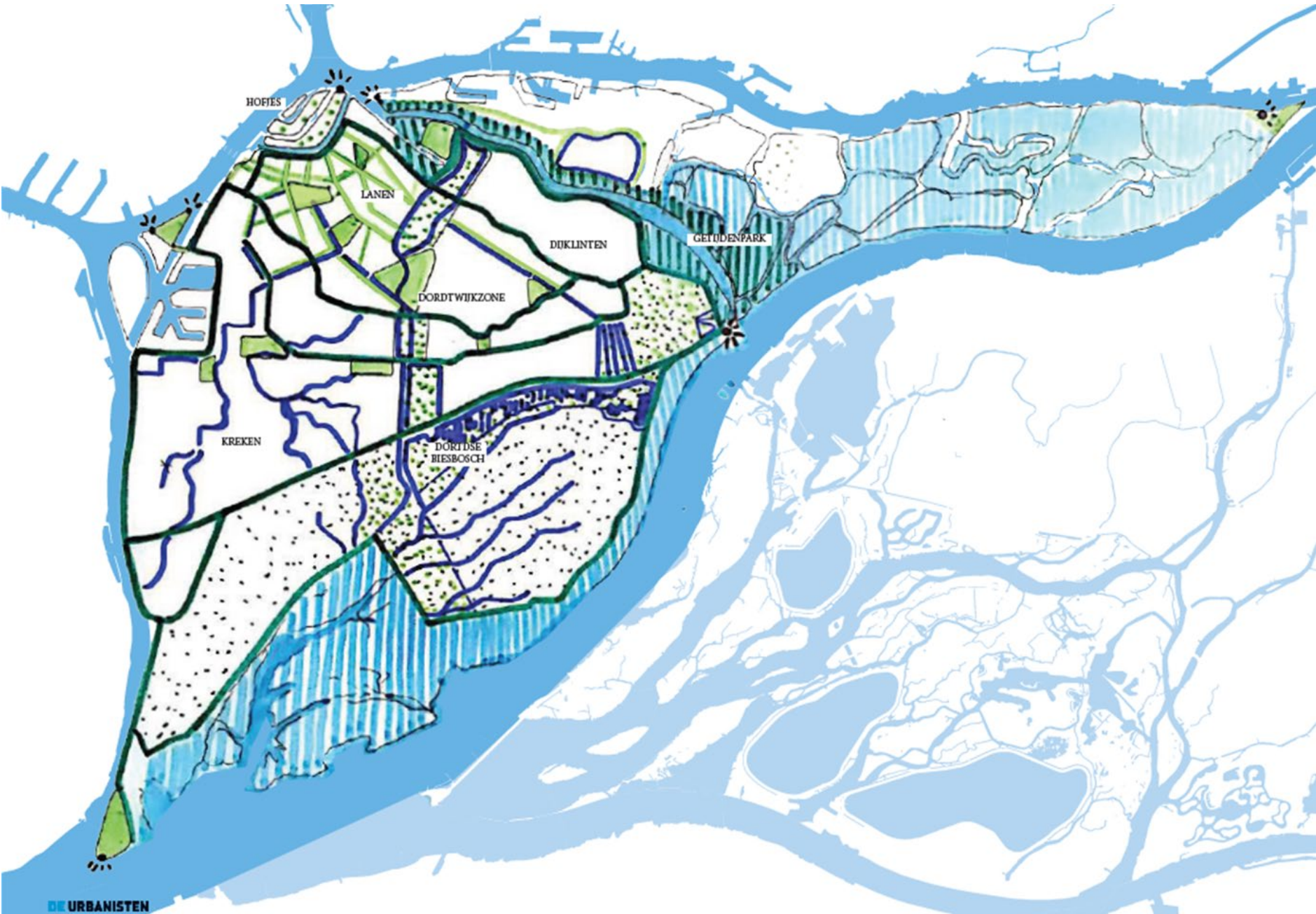


Aims of Living Lab on Spatial Adaptation

- Formulate vision for the green blue network, as leverage for the housing ambition
- Look for connections to investment agenda's and place individual projects into an integrated perspective (with participatory design)
- Involve public and private partners as beneficiaries and potential co-investors



Vision for the green blue network



Transformation of Dordtwijkzone into new city park

Dordrecht

2018

28

concept
INTRODUCTIETOUR

09

werken
MET
de natuur

Thirza
van
Cirkellab

groen
levert **ECONOMISCHE**
WAARDE op
voor een stad

de groene
long

FREE
Sportzone

bruisende
sport
parken

John
van
de
Sportraad

Wie gaat
dat
betalen?

dit gaat
zich terug-
betalen
aan de
achterkant

ik voel
me FIT
man!

we gaan de sportparken verbinden

Maak
de fietspaden
beter!
en de Dordische
Biesbosch

van
SPORT PARK

naar **STADSPARK**

**CENTRAL
PARK** ?

OPEN
STRUCTUUR

we willen jullie, de stad,
erbij betrekken!

**KWARTIER
MAKERS**

daarnaast
MOET
groene
beleefbare
ruimte

Wat voor
park kan
dit worden?

Wie wil
er aan
mee werken?

inrichting
&
gebruik =

* Zowel de **INRICHTING**
als het **GEBRUIK**
van het park →
Zelfvoorzienend
&
Circulair

10.000 woningen!

Joost
Leemans

Ellen
Kelder

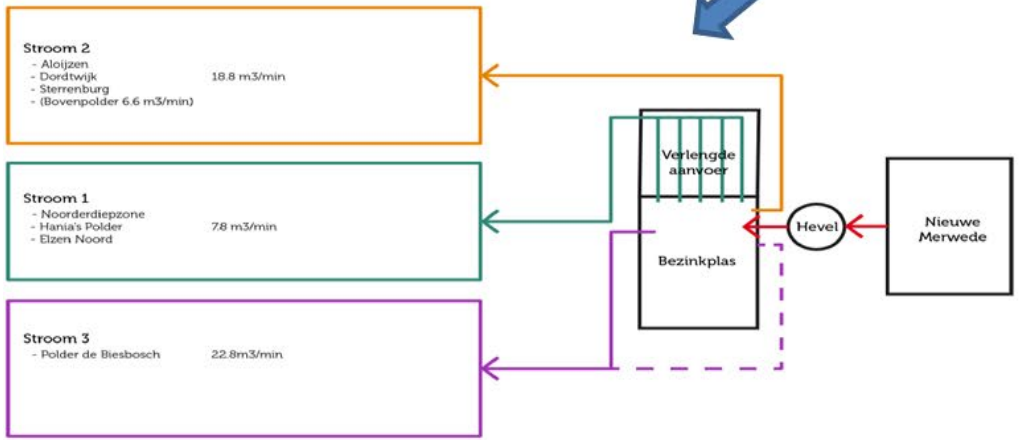
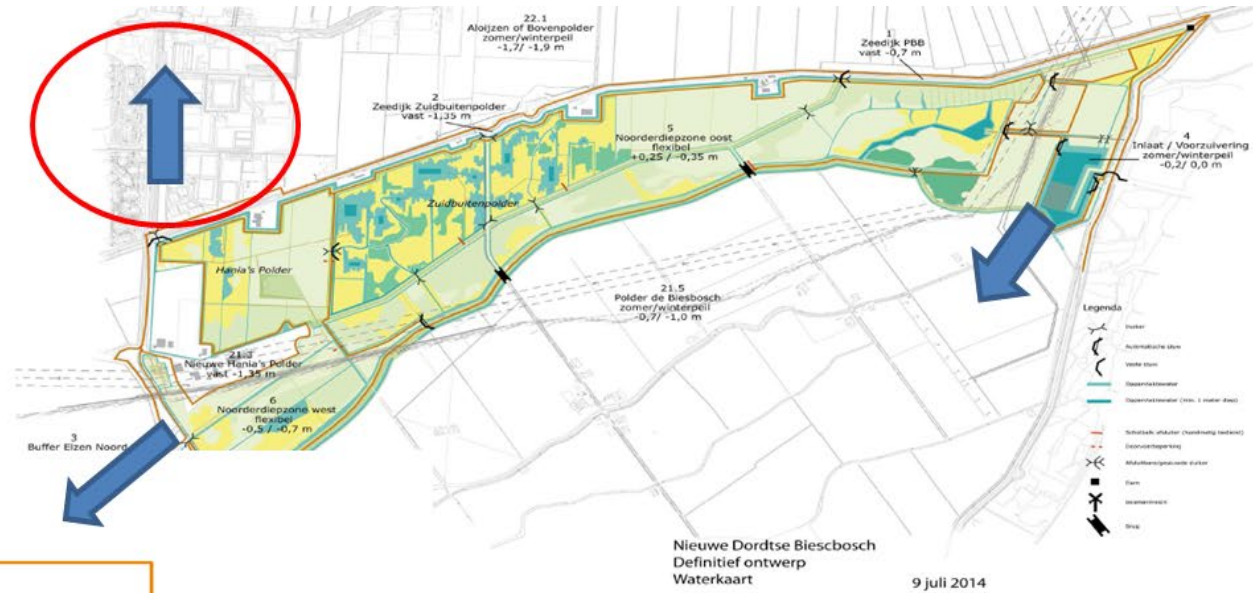
Linkage opportunity: Restructuring of Vogelbuurt



Linkage opportunity: Restructuring of sport fields



Linkage opportunity: Improvement of water quality



Transformation of Wantijzone into 'River as Tidal Park'

2018

28

Dordrecht

09

concept
INTRODUCTIETOUR

werken
MET
de natuur

Thirza
van
Cirkellab

groen
levert **ECONOMISCHE**
WAARDE op
voor een stad

de groene
long

FREE
Sportzone

bruisende
sport
parken

John
van
de
Sportraad

Wie gaat
dat
betalen?

dit gaat
zich terug-
betalen aan de
achterkant

ik voel
me FIT
man!

we gaan de sportparken verbinden

Maak
de fietspaden
beter!
en de Dordische
Biesbosch

van
SPORT PARK

naar **STADSPARK**

CENTRAL PARK ?

OPEN
STRUCTUUR

we willen jullie, de stad,
erbij betrekken!

KWARTIER
MAKERS

daarnaast
MOET
groene
beleefbare
ruimte

Wat voor
park kan
dit worden?

Wie wil
er aan
mee werken?



* Zowel de **INRICHTING**
als het **GEBRUIK**
van het park →
Zelfvoorzienend
& Circulair



10.000 woningen!

Joost
Leemans

Ellen
Kelder

Transformation of Wantijzone into a 'River as Tidal Park'



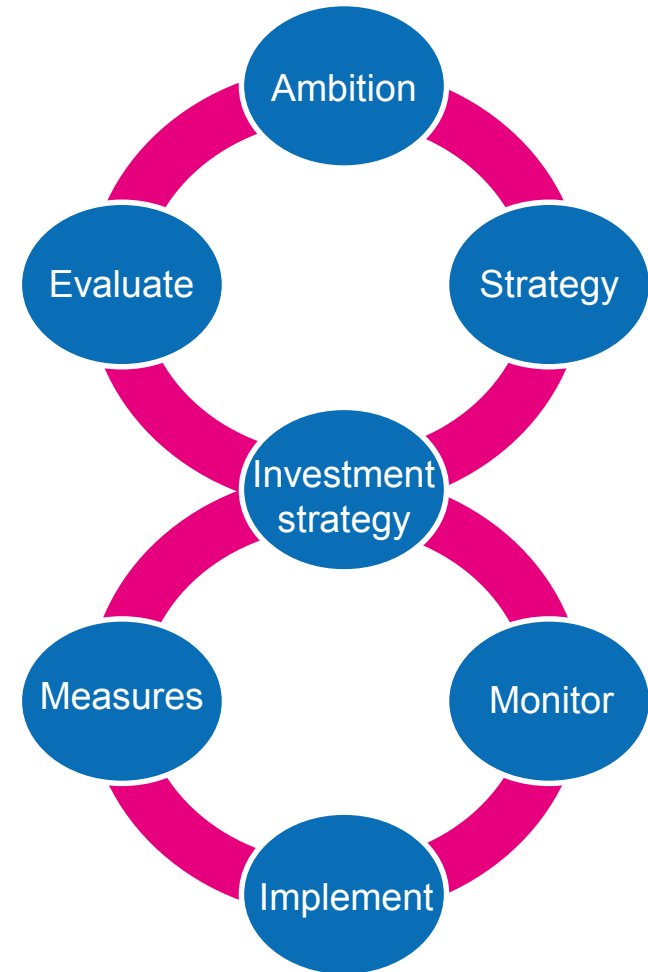
Linkage opportunity: Depoldering of Otterpolder



Tried it before. Why did it work this time?

Enabling factors to link opportunities included:

- Vague: green and blue in the city
- Inclusive: partners and beneficiaries
- Focus: ambition and strategy
- Interactive: participatory design
- Engage politicians



Concluding remarks

Some insights on DMDU in spatial adaptation:

- Embrace vagueness: partners will join dialogue if it is relevant to their own policy objectives;
- Start dialogue from opportunities (e.g. nature restoration, liveability), not threats / adaptation tipping points (ATPs);
- Timing is everything and nothing: in theory linkage opportunities are possible when ATPs align, in practice they never align;
- It takes political will / courage to bring investment moments (ATPs) forward in time;
- Spatial planning is all about dealing with multiple (conflicting) objectives and uncertainties. This includes avoiding regret.

Avoiding regrets with adaptive / organic programming

